



The fast and affordable business printers that fit anywhere on your desktop

Clear, crisp black & white output at up to 21 ppm¹ — in a compact design that's perfect for your small office or home office

B2200/B2400 Series printers from OKI Printing Solutions are built for efficiency and speed, and to fit in just about any environment. If you're looking to improve the productivity and lower the operating costs of your business, look no further than the B2200/B2400 Series digital monochrome printers.

All B2200/B2400 models deliver up to 21 ppm, with the first page printing in less than 6 seconds.¹ They produce black & white output that's clear and crisp in 1200 x 600 dpi resolution, using a two-piece consumables system for long-lasting, high-quality performance and a low cost of operation. In terms of durability, these printers have a monthly duty cycle of 15,000 pages.

B2200/B2400 Series printers have a 150-sheet standard paper capacity plus a manual bypass with a straight paper path for printing envelopes and heavier stock.

Designed for the small work environment. B2200/B2400 Series printers, with their compact size and stylish lines, fit just about anywhere in the office—on any desk.

B2200 Series printers come with Enhanced Windows® Printing compatibility (GDI); the B2400 Series has PCL® 5e and PCL 6 emulation standard. They all perform equally well with the most popular Windows® operating systems.

All models have high-speed USB 2.0 connectivity; B2400 Series models also have a parallel port. And, equipped with a 10/100 Base-T OkiLAN® print server, the B2200n and B2400n models make network printing effortless and affordable.

Backed by unmatched support. OKI Printing Solutions is so confident in the reliability and performance of the B2200/B2400 Series that we provide an industry-leading 5-year printhead warranty and a 1-year limited printer warranty with Overnight Exchange.²

If you need technical assistance, you can speak to a live expert—24/7/365—by calling, toll free, 800.OKI.DATA (800.654.3282).²

B2200/B2400 Series from OKI Printing Solutions: the fast and affordable business printers that fit anywhere on your desktop.

B2200/B2400 Series Highlights:

- As fast as 21 ppm print speed; less than 6.0-second time to first page¹
- Clear, crisp 1200 x 600 dpi output
- Separate toner and image drum configuration for lower operating costs
- Compatible with Windows® Vista®, XP, 2000, NT® 4.0; Mac® OS 9.2/OS X 10.3 and higher
- 266 MHz PowerPC processor
- Standard high-speed USB connectivity
- Available with internal network print server³ and Parallel connectivity⁴
- 150-sheet paper tray
- Up to 2,000-page toner capacity
- 1-Year limited warranty with Overnight Exchange²; 5-Year limited printhead warranty
- Live, toll-free technical support 24/7/365²



The B2400 Digital Monochrome Printer

¹ Published performance results based on laboratory testing. Individual results may vary.

² Available in the U.S. and Canada only.

³ B2200n and B2400n models only.

⁴ B2400 Series models only.

B2200/B2400 Series

Specifications

Performance

- **Print Speed:** Up to 21 pages per minute¹
- **CPU:** 266 MHz/32 bit PowerPC
- **Time to First Page:** As fast as 6.0 seconds¹
- **Print Resolution:** 1200 x 600 dpi
- **Duty Cycle:** 15,000 pages per month

Compatibility

- **Emulations:** B2400 Series – PCL® 5e, PCL 6; IBM® ProPrinter® III XL; Epson® FX; B2200 Series – Enhanced Windows® Printing (GDI)
- **Operating Systems:** Windows® Vista®/Vista x64, XP/XP x64, Server 2003/Server 2003 x64, 2000 Server/2000 Client, NT® 4.0, Me, and 98; Mac® Classic OS 9.2/OS X 10.3 and higher

Interfaces

- **Connectivity:** High-speed USB v2.0 – all models; Ethernet via OkiLAN internal print server card – B2200n and B2400n only; Parallel – B2400 Series only

Memory

- **Standard/Maximum RAM:** B2200n and B2400n – 16 MB; B2200 and B2400 – 8 MB

Paper Handling

- **Main Paper Tray:** 150 sheets max.
- **Manual Bypass:** 1 sheet max.
- **Paper Types:** Letter, Legal, Executive, A4, A5, A6, B5; C5, DL, Com 9, Com 10 and Monarch envelopes
- **Paper Size:** 3.5" x 5.8" min. to 8.5" x 14" max.
- **Standard Paper Output:** 30 sheets, face up
- **Paper Weight:** Main paper tray 16 lb. – 28 lb. bond (60 – 75 gsm); manual bypass 16 lb. – 32 lb. bond (60 – 120 gsm)

Typefaces

- **Scalable Fonts:** B2400 Series – 33 resident PCL fonts; B2200 Series – fonts available through host PC
- **Bitmap Fonts:** B2400 Series – Line printer; OCR-A/B; USPS ZIP Bar code

Environmental

- **Size (WxDxH):** 12.6" x 8.0" x 7.1" (32.0 cm x 20.4 cm x 18.1 cm)
- **Weight:** Approx. 9.3 lb. (4.2 kg)
- **Power Consumption (approximate):** Peak 660W; Typical operation 360W; Idle 60W; Power Save <10W
- **Acoustic Noise:** Operating 52dB; Standby and Power Save Mode – ambient (background) level

Supplies

- **Toner Cartridge:** 2,000 pages²
- **Image Drum:** 15,000 pages³

Warranty

- **Printer:** 1-Year limited warranty on parts and labor with Overnight Exchange⁴
- **LED Printhead:** 5-Year limited warranty

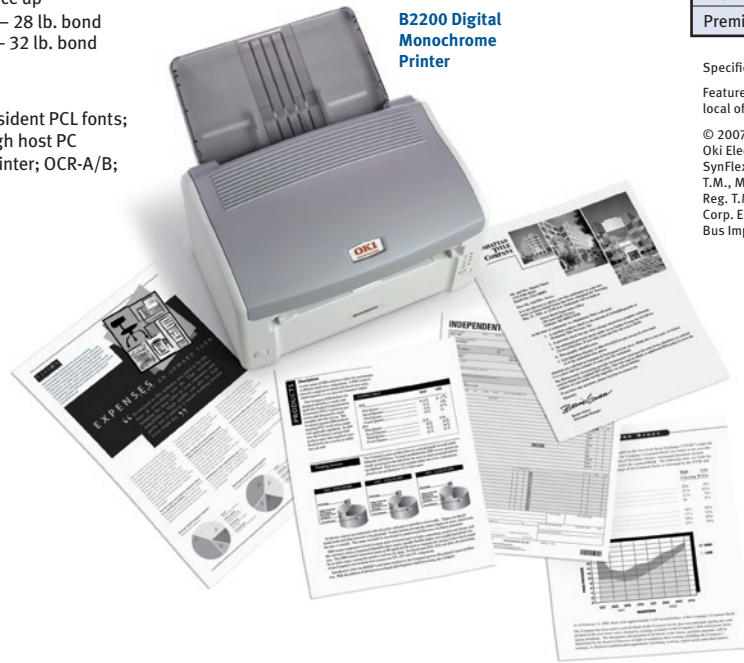
For more information on Digital Mono printers and supplies, including OKIcare® Extended Service Programs: **1.800.OKI.DATA** (800.654.3282).⁴

¹ Published performance results based on laboratory testing. Individual results may vary.

² Declared yield in accordance with ISO/IEC 19752.

³ Estimated life, continuous printing (may vary depending on the number of printed pages per job).

⁴ Available in the U.S. and Canada only.



B2200 Digital Monochrome Printer

Ordering Information

Description	Part Numbers
B2200 (120V)	43641701
B2200 (230V)	43641702
B2200n (120V)	43641703
B2200n (230V)	43641704
B2400 (120V)	43641801
B2400 (230V)	43641802
B2400n (120V)	43641803
B2400n (230V)	43641804
OKIcare® Warranty Extensions⁴	
B2000 Series 1-Year Overnight Exchange	58281901
B2000 Series 2-Year Overnight Exchange	58281902
B2000 Series 1-Year Depot	58282001
B2000 Series 2-Year Depot	58282002
Supplies	
Toner Cartridge: Avg. life – 2,000 pg. ²	43640301
Image Drum: Avg. life – 15,000 pg. ³	43650301
Print Media	
Bright White Proofing Sheets (32 lb.):	
8.5" x 11"	500 52206101
Premium Color Transparency Film	50 52205701
SynFlex™ Paper (8.5" x 11" –	
Waterproof and Tear-resistant)	100 52205901
Premium Envelopes (size #10):	100 52206301
Premium Envelopes (size #10):	500 52206301

Specifications are subject to change without notice.

Featured products may not be available in all countries. Please contact your local office for regional availability.

© 2007 Oki Data Americas, Inc. OKI, OkiLAN, OKIcare Reg. T.M., M.D., M.R., Oki Electric Industry Co., Ltd. Overnight Exchange logo, 7-Day/24-Hour logo, SynFlex T.M., Oki Data Americas, Inc. Windows, Windows NT, Vista, Reg. T.M., Microsoft Corp. PCL Reg. T.M., Hewlett-Packard Co. IBM, ProPrinter Reg. T.M., International Business Machine, Inc. Epson Reg. T.M., Seiko Epson Corp. ENERGY STAR Reg. T.M., U.S. EPA. USB-IF logo T.M., Universal Serial Bus Implementers Forum, Inc.



OKI DATA AMERICAS, INC.

USA
2000 BISHOPS GATE BLVD.
MOUNT LAUREL, NJ 08054-4620
TEL: 800.OKI.DATA (800.654.3282)
FAX: 856.222.5320

CANADA
2735 MATHESON BLVD. EAST
MISSISSAUGA, ONTARIO L4W 4M8
TEL: 905.238.4250
FAX: 905.238.4421

LATIN AMÉRICA
2000 BISHOPS GATE BLVD.
MOUNT LAUREL, NJ 08054-4620
TEL: 856.231.0002
FAX: 856.222.5071

OKI DATA DE MÉXICO, S.A. DE C.V.
MARIANO ESCOBEDO, 748 8^º PISO
COL. NUEVA ANZURES C.P. 11590
MÉXICO, D.F.
TEL: 55.5263.8780
FAX: 55.5250.3501

OKI DATA DO BRASIL INFORMÁTICA LTDA.
AV. ALFREDO EGÍDIO DE SOUZA ARANHA, 100
BLOCO C – 4^º ANDAR
04726-170 – SÃO PAULO – SP – BRASIL
TEL: 11.3444.3500
FAX: 11.3444.3502

WWW.OKIPRINTINGSOLUTIONS.COM